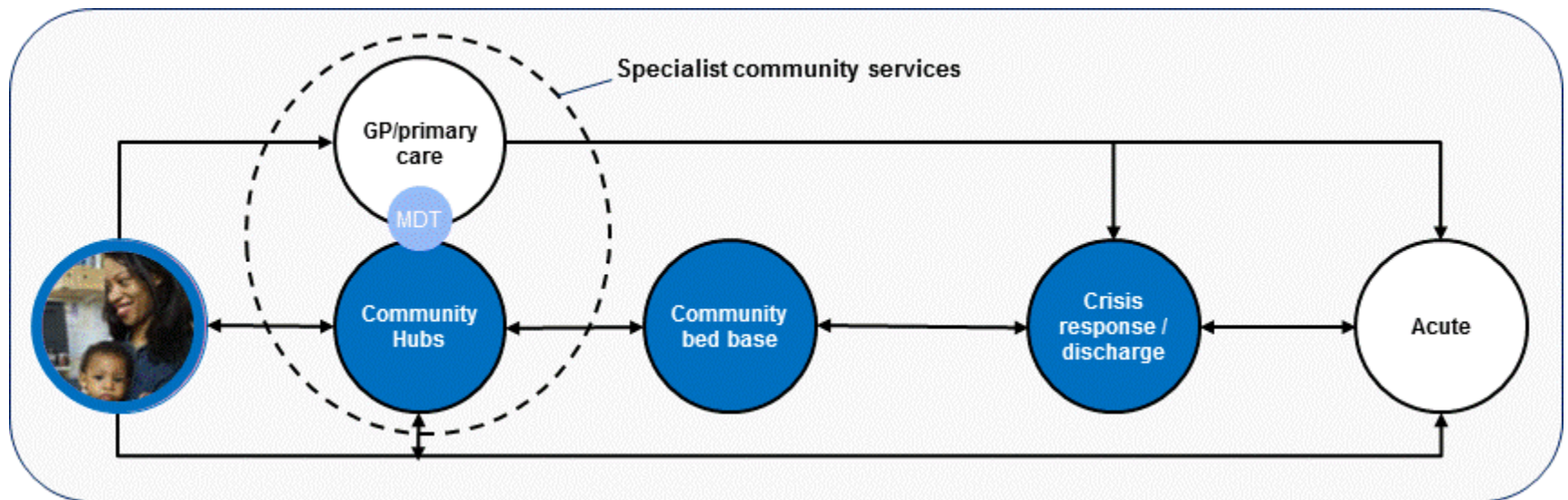


Andrew Jepps
Assistant Director
Integrated Wellbeing Services
Northamptonshire County Council

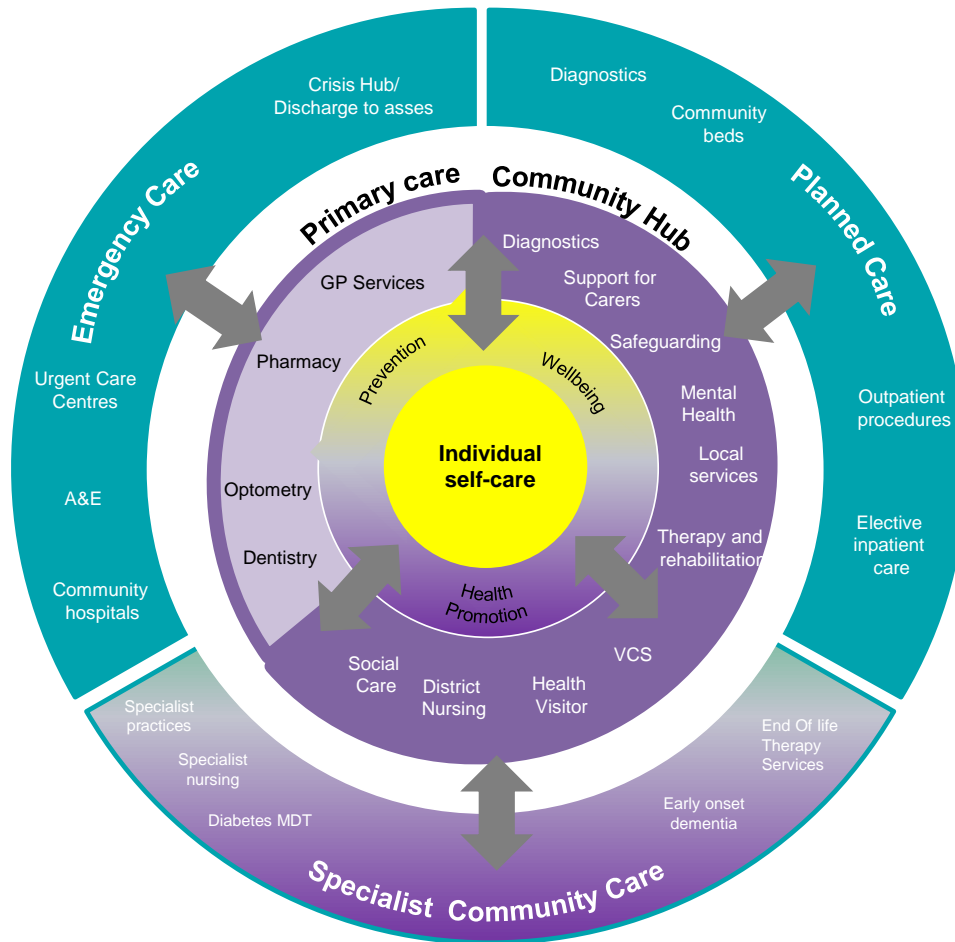


Healthier Northamptonshire

- **Our vision for integration: The goal of the integrated health and social care system is to enable people to enjoy good health and wellbeing living at home as independently as possible. This will be achieved through approaches which combine the best from the traditions of person centred approaches and clinical leadership into a single value base**



Healthier Northamptonshire



Our vision for integration supports the overall service model for Healthier Northamptonshire. This overarching model aims to:

- Shift the model of care into more appropriate settings and away from traditional acute hospital beds;
- Focus on enabling patients/service users to keep well through better self care and self management;
- Provide a range of alternative services closer to home in order to prevent the need to access acute hospital services;
- Emphasise building community resilience, prevention and early intervention to help develop a more sustainable health and social care system, making the best use of the limited resources available.

